



Southeast Michigan iSeries User Group



IBM i Navigator "The Basics" Hands-on

Date: Tuesday, October 15, 2013
Time: 5:30 (Deli snack) - 6:00 (Meeting)
Location: IBM-Southfield
18000 West Nine Mile Road
Southfield, MI 48075 ([map](#))



Speaker: Larry Bolhuis

Notes: Join in onsite at IBM or remotely in webinar format. To prepare for the session please be sure to have [Navigator](#) loaded on your laptop or desk top.

Remote access: Join our meeting: [GoToMeeting](#) Tuesday, October 15, 2013 at 6:00 PM Eastern Daylight Time.
Use your microphone and speakers (VoIP) - a headset is recommended. Or, call in using your telephone.
Dial +1 (630) 869-1013
Access Code: 475-140-398
Audio PIN: Shown after joining the meeting
Meeting ID: 475-140-398

Larry will walk through basics of Navigator. Session will include overview of Navigator functionality and covering the basics. System i Navigator is available to System i users that have client access. Attendees are welcome to walk through hands on making using of iDevcloud. We will explore the capabilities and use of Navigator during this session.

Join in onsite at IBM or remotely in webinar format. To prepare for the session please be sure to have Navigator loaded on your laptop or desk top.

The install and the service pack can be down loaded from:

<http://www-03.ibm.com/systems/i/software/access/windows/casp.html>.

This link will have other links to iSeries Access V5R4 -- V7R1 as well as a link to the needed MS update. Note: the iSeries Access level is NOT tied to the i5 OS level. (i5 OS V5R4 will support PCs running iSeries Access V7R1).

About the Speaker:

Larry has a bachelor's degree in Computer Science. He began working on IBM midrange equipment with the S/34 in 1984 and the AS/400 with its introduction in 1988. Larry currently has held more than 30

IBM Technical certifications from AS/400 through IBM I and POWER Systems including IBM Certified Advanced Technical Expert – System i. Larry brings his extensive IBM and Cisco connectivity knowledge to his networking, LPAR and Systems Management sessions. Larry also works on routers, firewalls, and VPNs. He has been awarded Gold, Silver and Bronze medals was awarded the Al Barsa memorial Scholarship, as well as COMMON's Distinguished Service Award. He is Chief i-entist at Frankeni Technology Consulting LLC in Middleville, MI.

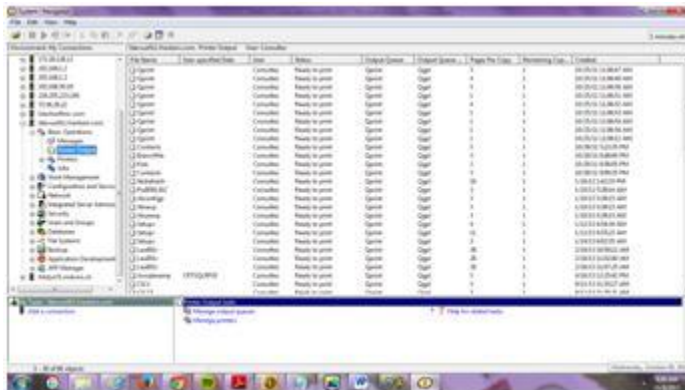
From the President:

Dear Members:

Have you wanted to dive into learning how to use Navigator or for those that have experience using Navigator have you wanted to learn more about how to make use of Navigator. Now's your chance! Join us in October and November either onsite at IBM or remotely.

Based on response from group member feedback, we will be diving into System i Navigator. Navigator is an important tool for IBM i colleagues.

We will kick things off in October with Larry Bolhuis walking us through the basic operations and system management utilizing System i navigator. Bring along your laptop loaded with Navigator and you can walk through examples with Larry on the user group's iDevcloud box. Larry will be covering the basics. You're sure to walk away with a better understanding of how to make use of Navigator for basic system support functions and system management. Even if you're familiar with using Navigator, join in and walk away with tools that can be utilized through use of Navigator. System i Navigator is a powerful graphical interface that easily works with the System i product. With each new release, your graphical interface to the System i product continues to expand.



We'll continue our journey in learning and utilization of Navigator in November focusing on Navigator use from a "programmers prospective". Paul Tuohy will walk through the Database function in Navigator from a programmer's point of view. The session will cover anything and

everything about the database feature of Navigator. The session will include database access, SQL, and much more, focusing on the Navigator programmer's features.

Both sessions will be presented in webinar format. So you can join in on site at IBM with fellow colleagues or join in remotely. Webinar access details will be published prior to the meeting.

Please be sure to be prepared by loading Navigator on your laptops. The install and the service pack can be down loaded from:

<http://www-03.ibm.com/systems/i/software/access/windows/casp.html>

This link will have other links to iSeries Access V5R4 -- V7R1 as well as a link to the needed MS update. Note: the iSeries Access level is NOT tied to the i5 OS level. (i5 OS V5R4 will support PCs running iSeries Access V7R1) *Thanks to Chris Vanliere for providing the link and explanation.*

It's that time of year again to think about membership renewal. Membership dues help us make all of the great activities and opportunities for i colleagues possible. Dues are paid on an annual basis. Select the Membership tab and download the membership renewal form. Dues are \$100 per organization and \$50 per individual. As a member of SEMIUG you're automatically a member of COMMON and COMMON benefits. You also are provided discounted rate to MITEC. The MITEC conference event is a power packed day of IBM i education sponsored by SEMIUG and other local user groups. SEMIUG strives to deliver world class presentations on current topics and also a great opportunity to interact with fellow i colleagues. We look forward to seeing you onsite or having you join in remotely, so together we can dive into learning more about System i Navigator.

Regards,
Laura



Southeast Michigan iSeries User Group



Southeast Michigan iSeries User Group
P.O. Box 99284, Troy, Michigan 48099-9284
Membership Renewal
January - December

Date: _____

Company Name: _____

Company Web Site: _____

Mailing Address: _____

Primary Contact: _____

(Voting Member)

Phone: (____) ____ - _____ Fax: (____) ____ - _____

E-Mail: _____

The primary contact will have the responsibility for member voting as stipulated in the constitution.

The primary contact name can be changed at will by the member company. Membership voting rights are limited to one person employed by an organization regardless of holding an individual or organization membership.

Paper copies of the newsletter are no longer being mailed. The newsletter will be distributed through email (usually in PDF format). Feel free to forward the email on to others.

Annual dues per member company - \$100.00; Individual memberships are available for \$50.00 (An individual is defined as a person not directly employed by an organization or a person employed by an organization paying membership dues from personal funds). Memberships are for the calendar year, January through December. Dues are not prorated for a partial year. Please make check payable to:

Southeast Michigan iSeries User Group.

Donations are appreciated: Donation: _____