



Southeast Michigan IBM i User Group



IBM i Systems Management Workshop

- Date:** Tuesday September 15
- Time:** 5:30 (Deli snack) - 6:00 (Meeting)
- Location:** BrassCraft Manufacturing Company
39600 Orchard Hill Place
Novi, MI 48375-5331 ([map](#))
- Speaker:** Larry Bolhuis

This workshop will focus on key items that should be set up and managed on your system to assure it is running well and stays that way!

In this workshop we'll discuss:

1. Setup and verify of Call Home functions on the HMC. Setup of a limited HMC user. A review of HMC command line capability including watching HMC disk space.
2. Setup and verify of Call Home functions in IBMi. What and how to set them up and how to test them to be sure your system is protected.
3. Explore graphical methods for monitoring IBM i Performance. This includes Management Central and IBM Navigator for i System Monitors
4. Things to watch out for: Memory usage, Disk I/O and storage, avoiding dead cash batteries.
5. Gut check on PTFs. We'll discuss how to find out your current levels how to get new levels and tools to help you install them. This will include PTF Groups and Image catalogues. Flexible Service Processor (FSP) updates, why, when and how.
6. Storage Management - Discover your disk and what's filling it. Tips for deciding on what doesn't need to be there.
7. Various System values you should understand.
8. Spool file maintenance including use of iASPs, Joblog Servers, and disconnected spool file functions.

About the presenter

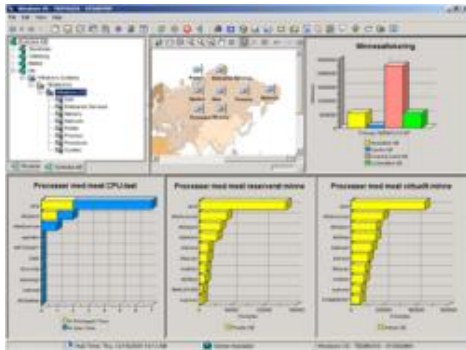
Larry has a bachelor's degree in Computer Science. He began working on IBM midrange equipment with the S/34 in 1984 and the AS/400 with its introduction in 1988. Larry currently has held more than 30 IBM Technical certifications from AS/400 through IBM I and POWER Systems including IBM Certified Advanced Technical Expert - System i. Larry brings his extensive IBM and Cisco connectivity knowledge to his networking, LPAR and Systems Management sessions. Larry also works on routers, firewalls, and VPNs. He has been awarded Gold, Silver and Bronze medals was awarded the Al Barsa memorial Scholarship, as well as COMMON's Distinguished Service Award. He is Chief i-entist at Frankeni Technology Consulting LLC in Middleville, MI.



From the President:

Dear Members:

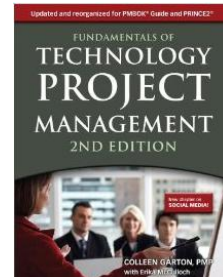
Hope you had a great summer. It always seems goes by too quickly. We're fortunate to have the changing of seasons in Michigan but it is always hard to see summer come to an end. We have a great year planned for SEMIUG members and look forward to seeing everyone participate at upcoming meetings.



We'll kick off the 2015/2016 year at BrassCraft with Larry Bolhuis providing an IBM I Systems Management Workshop. We had such great feed-back on the topic with Larry at MITEC and also several requests. Whether Systems Management is your area of responsibility or not you're sure to leave the meeting with something that you will be able to apply within your environment. You can join in onsite or remotely. If you like you can sign on to the group's iDevcloud box and try out what

Larry is presenting. No matter what area of technical expertise your job responsibilities require Systems Management somehow touches and/or requires your understanding of the topic. September's meeting is one you don't want to miss.

We're planning OS 7.2 updates in October at IBM in Southfield. In November at Eaton the topic will be Project Management. Those that attend on site will be provided MCPress Fundamentals of Technology and Project Management 2nd Edition, on a first come first sever basis (we have 20 + books that will be distributed. Thanks to MCPress and Maxava for making this possible.



SEMIUG was awarded a Maxava grant again this year. The funding will go toward user group activities including making the iDevcloud box available, hands on activities, student/group member activities and allowing for SEMIUG to bring world class current topics to group members and much more. A BIG THANK YOU to Maxava for being such a great friend to the IBM i community.

We look forward to seeing you at upcoming meetings.

Regards,

Laura



Southeast Michigan IBM i User Group



**Southeast Michigan IBM i User Group
P.O. Box 80135, Rochester, Michigan 48308
Membership Renewal
January - December**

Date: _____

Company Name: _____

Company Web Site: _____

Mailing Address: _____

Primary Contact: _____

(Voting Member)

Phone: (____) ____ - _____ Fax: (____) ____ - _____

E-Mail: _____

The primary contact will have the responsibility for member voting as stipulated in the constitution. The primary contact name can be changed at will by the member company. Membership voting rights are limited to one person employed by an organization regardless of holding an individual or organization membership.

Paper copies of the newsletter are no longer being mailed. The newsletter will be distributed through email (usually in PDF format). Feel free to forward the email on to others.

Annual dues per member company - \$100.00; Individual memberships are available for \$50.00 (An individual is defined as a person not directly employed by an organization or a person employed by an organization paying membership dues from personal funds). Memberships are for the calendar year, January through December. Dues are not prorated for a partial year. Please make check payable to:

Southeast Michigan IBM i User Group.

Donations are appreciated: Donation: _____